

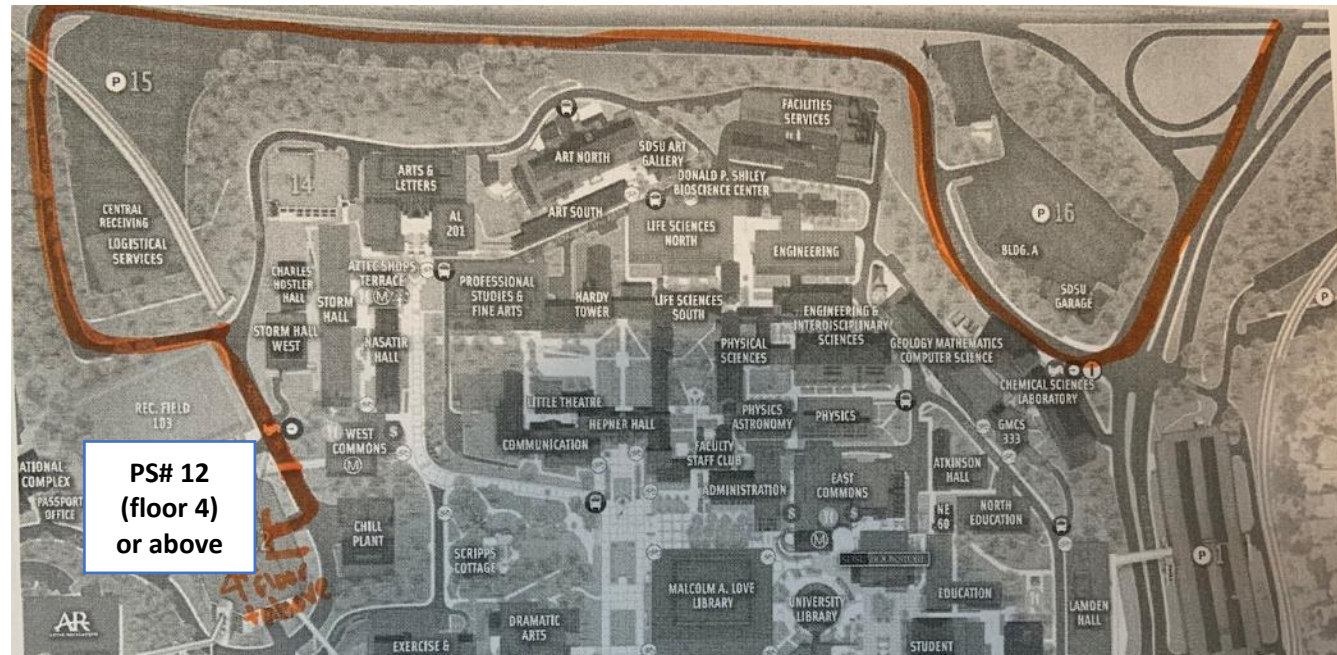
Big Data Hackathon for San Diego: Parking Directions

Check In Times: Week-1 (November 08) Saturday: Check-in time: 8:30am, and Opening Session: 9:00am.

Week-2 (November 15) Saturday: Check-in time: 8:30am, and Opening Session: 9:00am.

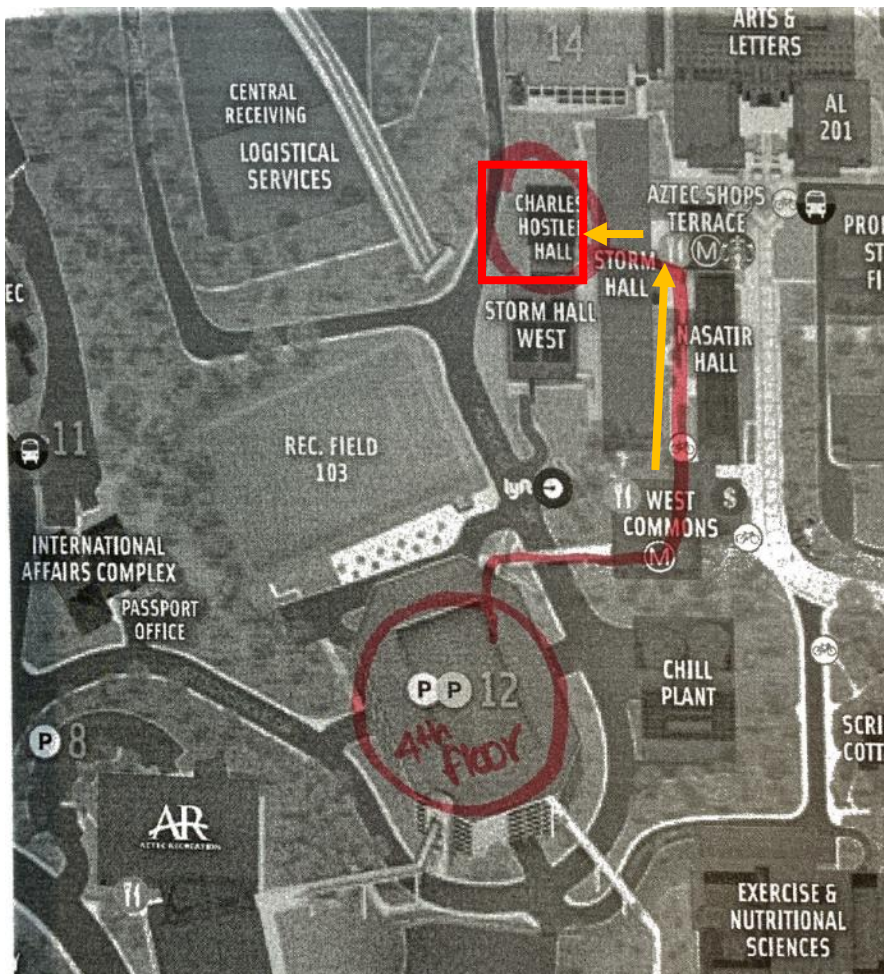
Location: Storm Hall West #12 (Charles Hostler Hall)

Driving Directions: **From L.A:** Take **I-5 South** highway, continue on **I-805 south** for 11 miles to **I-8 East** , continue on **I-8 East** for 4 miles and exit on **College Avenue**. **From Southern San Diego:** Take **805 (north)**, merge to **I-8 East**, exit on **College Avenue**.



1. After you get off the I-8 College Avenue exit, you will want to **make a right on Canyon Crest Drive** (It's the first stoplight at the exit – SDSU building and marquis is on your right). Follow Canyon Crest Drive as shown above (orange line on map). The road will curve uphill.
2. At the stop sign make a left. You will see **Parking structure 12** on your right. **Enter the parking structure and park on floors 4 (level 4) or above (Student Parking lots) (you have free parking, no need to pay). Please come to the Hackathon Registration Table to Register your Vehicle License number in order to Validate your free parking.**
3. Park on the **north side of the parking structure** (so you can take the North bank elevators if on floors 5 or higher). See the following for the directions to the venue (Storm Hall West #12) from the parking structure. If you see two elevators, that is

the north side. If you see four elevators, that is the south side (then you need to go to the opposite side in the parking structure).



- When you leave parking structure 12, make sure to look for **the bank of elevators (two only) that are facing north** – (if you are on floor 4)- **you can walk past the elevators to the pedestrian walkway (the bridge).**
- (If you park on level 5 or above, take the elevator bank to floor 4 and get out and take the walkway).
- The walkway will curve around West Commons – go around the West Commons building (don't go inside) and go up the curved stairs.
- At the top of the stairs -you will see a walkway to your left. Make a left.
- You will see Nasatir Hall on your right and Storm Hall on the right. Keep walking straight.
- When you see the Starbucks in front of you (go to your left) – pass the elevator bank of Storm Hall and you will follow the signs to **Charles Hostler Hall.**